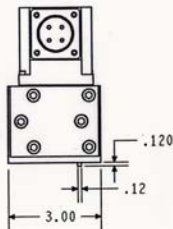
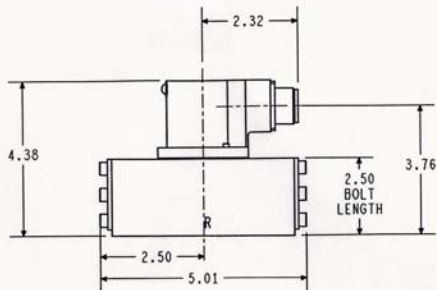
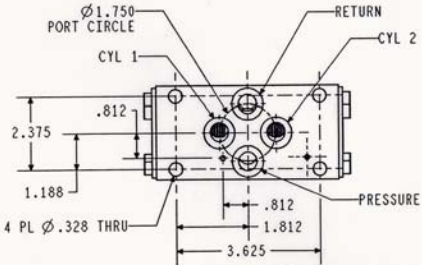


DWG STATUS	PRELIMINARY	REVISIONS		
ZONE	REV	DESCRIPTION	DATE	APPROVED



PERFORMANCE SPECIFICATIONS

SYSTEM FILTRATION	25 MICRON RECOMMENDED
FLUID	PETROLEUM BASE
TEMP RANGE	-40 TO +250°F
PRESSURE	
OPERATING	200 PSI TO 3000 PSI
PROOF	4500 PSI
BURST	7500 PSI
RATED FLOW	40 GPM AT 1000 PSI PRESSURE DROP
LEAKAGE	
INTERNAL	0.40 GPM AT 1000 PSI
EXTERNAL	NONE
PRESSURE GAIN	30% SUPPLY MIN AT 2X RATED INPUT
HYSTERESIS	3% MAX OF RATED CURRENT
THRESHOLD	0.2% MAX OF RATED CURRENT
90° PHASE LAG	20Hz
-3db AMPLITUDE RATIO	20Hz
RATED CURRENT	50, 20, 10 mA
COIL RESISTANCE	80, 250, 1000 OHMS PER COIL STD
ELECTRICAL CONNECTOR	MS3102E-14S-2P
PORT O-RING SIZE	MS28775-016
O-RING COMPOUND	VITON
CONNECTOR POLARITY	A+ B- FLOW OUT CYL PORT 2 C+ D- FLOW OUT CYL PORT 2



QTY REQD	FIND NO	MODEL NAME	PART NUMBER	DESCRIPTION	MATL-MATL SPEC/STOCK SIZE	NOTE(S)
----------	---------	------------	-------------	-------------	---------------------------	---------

LIST OF MATERIALS OR PARTS LIST

UNLESS OTHERWISE SPECIFIED		CONTRACT NO	
DIMENSIONS ARE IN INCHES TOLERANCES ON: ANGLES ± .5° DECIMALS .XX ± .03, .XXX ± .010 125 SURFACE ROUGHNESS ASME B46.1 BREAK SHARP EDGES		DRAWN G.BURAU	01/08/28
		CHECK	
		ENGR	
		APPD	
		APPD	



ELECTROHYDRAULIC CONTROLS
A DOVER DIVERSIFIED CO.

JP 40 SERIES SERVOVALVE

SIZE	SD99298
A	
SCALE	NONE
SHEET	1 OF 1